

OMEGA
sΩccer club

Informational Package 2010-2011

Welcome to Omega

We are pleased that you are joining our club and hope that you are as excited as we are to get started with the new season. Joining Omega is joining a premier club with top coaching staff, top players and parents, and a definitive goal to make each player reach their soccer potential.

Our club is a member of US Club and we will participate in the Heartland Soccer Association during outdoor seasons (Fall / Spring). We will also participate in Indoor Soccer during the winter season .

This package has been prepared with players and parents in mind. It will provide as much information to make your relation with the club pleasant and enjoyable as possible. It will outline the roles, club structure, communication process, and member responsibilities among other relevant information.

We are very pleased that you have chosen to join us.

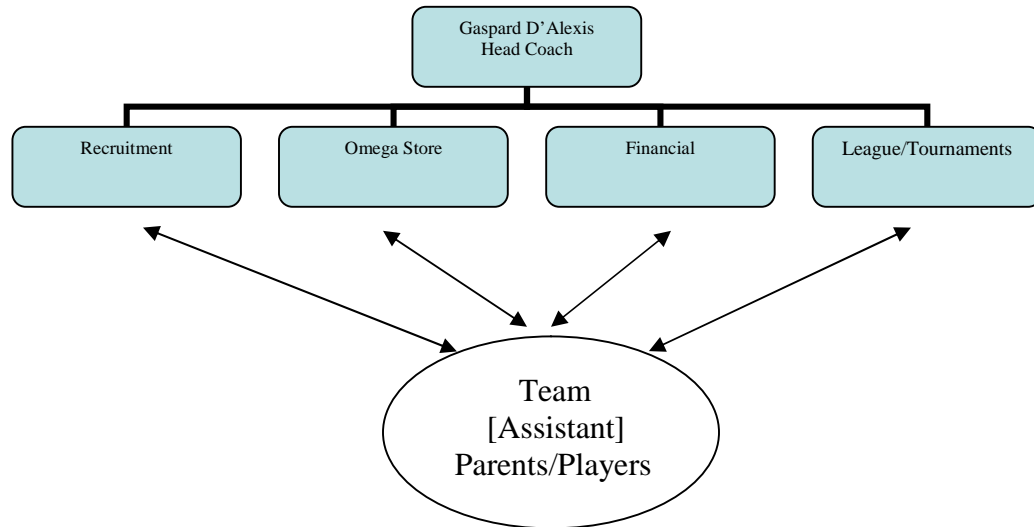
Sincerely,

Gaspard D'Alexis
Head Coach

CLUB INFORMATION

Club Structure

Omega soccer club is organized as follows:



Reporting to the Head coach are four coordinators (parents of Omega players) with roles on specific areas for the overall club:

- Recruitment oversees the communication with prospective and new players as well as the logistics for tryouts and summer camps.
- Omega Store is in charge of the equipment inventory as well as the marketing initiatives
- Financial defines and control the money related activities
- League/Tournaments is in charge of the roster management, relation with the leagues and the collection of the tournament information (pre and post)

Coordinators and Head coach are part of a board that establish club direction, provides guidelines, and evaluate and decides on outstanding issues for the club.

At the team level, there is an optional (but desirable) assistant that will help communicating team concerns and issues. Also will be roster as bench personnel in case of coach absence and will be in charge of the game sheets and team's card.

If as a player or parent you have any question of any type, you need to contact the head coach via email, phone or in person. He will either provide an answer or determine which coordinator can help you to get an answer.

Club Philosophy

- Learn about soccer and play it the right way
- Respect the opponent and the game itself
- Give always your best effort every single time
- Practice makes the difference
- Our style is precise passing, teamwork and tactics comparable only to the next level, college, or professional teams
- Make the learning fun, challenging, and worthy for all

Guidelines for Parents

The game is all about the fun and the satisfaction of your children. We know there are a lot of things that players and coaches cannot control either individually or collectively. The only thing for certain we can control is our reaction and the way we handle adversity and misfortune.

- Be always positive about your player development
- Do not let the heat of the moment speak for you. Cool off before making any comments.
- Become a spectator from the minute you drop your player to the field.
- Let the coach do his/her work. Do not coach during practices or games.

Practices

- Practice time is the most important time for player and team preparation.
- Make sure your player is on time and ready for practice

Games

- Stay away from the team bench. No parent should be seating on the bench with players except if requested by the coach.
- Do not go to the field during games without the permission of the coach and the referee.
- Do not criticize the referee directly and loudly for any reason.
- Ignore bad remarks from the opposite team parents and players

SOCCER INFORMATION

League Play

As Omega club player, you agree to participate in the following leagues:

Fall: Heartland Soccer Association
Winter: Indoor Soccer
Spring: Heartland Soccer Association

Note for High school players: Due to no club activities can be perform during the High School season, a high school player will be back to club participation the next practice day after your High school team finishes the season or when the first day of practice is set for the team. The coach, at his/her discretion, can strictly enforce this rule.

Tournaments

As Omega club player, you agree to participate, at least, to the following number of tournaments:

Fall: 2 Minimum
Winter: 1 Minimum
Spring: 2 Minimum

NOTE: State Cup is a special tournament during spring. It is a mandatory tournament for all players in a roster if team is participating. Fees will be collected from all players in the roster regardless of player participation.

Summer: 1

It is up to the club discretion the enforcement of this rule for each team. For a list of tournaments selected for the year, please go to www.omegasc.com to view the list. You need to communicate what tournaments player will be committed to.

Tournament Logistics

- Tournament dates and location will be set not later than 2 weeks after the season starts. (Some tournaments require early commitment and will be worked accordingly).
- All players are expected to stay in a hotel the night before the first game at a hotel, no matter of tournament location.
- Players will share rooms at the hotel in a ratio of 3-4 players per room.
- No player has a spot for tournament teams. Coach will make the selection based on multiple criteria such as willingness, player profile, and team position needs among others.

Tournament Fees

The cost of any tournament is a separate expense. It varies depending on the number of players and the tournament cost. Generally, tournament expenses per player include:

- Tournament Deposit of \$100 due at the start of the Fall Season to help pay the initial costs of tournaments. If your Son / Daughter is not asked to play in any tournament, then this deposit will be refunded or credited to your account.
- Tournament entry fee: \$25.00 to \$75.00
- Hotel room: \$75.00 to \$100.00 per room per night (3 to 4 players per room, usually 2 nights)
- Coach's travel expenses

Double Roster

Heartland Soccer Association allows a player to play on two different age group teams. The coach will evaluate player potential and offer it as an alternative to certain individuals. Players may accept or refuse the opportunity to play on two different age group teams.

A double roster player may or not pay some extra fees if applicable.

Financial Information

Please contact Melissa Swonger (our Club Financial officer) for a copy of the current Omega Fees listing (this includes Club dues, Monthly Coaching, League fees for Fall / Winter / Spring, Uniform Kit and Facilities rental fee)

Summer Camp

Part of the player development is done via the French Tech soccer camp. Each Omega player is expected to attend at least one week of such soccer camp. The camp is usually the first three weeks of June.

ENROLLMENT INFORMATION

All documents listed below need to be return by July 12th. You can mail/hand them to: Your respective team manager or mail to the Omega Soccer Club: Gaspard d'Alexis: 9807 Woodland Lane, Kansas City, MO 64131

Required Documents

You need to fill out the following required forms:

- Player Profile form
- US Soccer membership form
- Medical release form (Notarized)

Also, need to provide:

- 2 school pictures or other small pictures for the player's card (please write name on the back)
- Copy of Birth Certificate

OTHER INFORMATION

Communications

Omega web site www.omegasc.com is the main source for up-to-date information about the club. Make sure to check the website regularly for important information. Web site is updated daily (Mon-Fri) before 4:00 PM (and Weekends on an as needed basis).

We encourage all players and/or parents to log in and create a user account. By doing this, allows parents and players to post pictures and thoughts on the website.

Email will be used as a secondary communication tool.

Please email (Subject: age bracket; Body: Player & parents name) to admin@omegasc.com to allow us to create the distribution lists.

Phone Notifications: These are always nice, but Managers/coaches usually do not have the time to call each individual player on a last minuet basis. If checking the website, calling the hotline numbers for indoor/outdoor or email notification will not work for a player, then players will need to find a buddy on their team who can call them with updates and information.

Soccer Equipment

The Omega Store carries not only uniforms but other soccer related clothing and equipment. Please make sure to check the Omega Store before buying from somebody else. Sponsors are willing to keep supporting our club if sales are coming via our store. Every time you buy from the Omega Store you are not only getting a good quality product but also helping the club to maintain a very important sponsorship.